

EXPANDED MESH



ARCHITECTURE LINE

IDEAS TAKE SHAPE





Architects, Designers, Façade Cladding Specialists, Contractors and Fabricators around the world choose our expanded metal mesh for its unique look, versatility and Quality.

Our material offers a practical and stylish solution to create a modern and elegant outer skin to landmark buildings as well as enhancing the appearance of urban areas and commercial facilities.

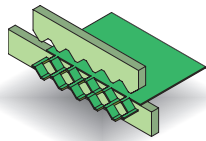
*With **70 year experience in manufacturing mesh for Architecture**, our Group is at the forefront of innovation when it comes to expanded metal mesh. With a range of patterns varying from 50 microns to 800mm eyelet size and an endless array of shapes, all requirements of transparency, ventilation, shading, lightweight, sustainability and resistance are satisfied. Our experts can assist with your project from day one, from the elevation first sketch to the installation of finished mesh panels on site.*

We are the partner transforming the Architect's idea into a producible and attractive metal product.



Green energy

70% of the energy required for our production is obtained from our photovoltaic system.



Pollution-free process

“Expanding” is a cold-pressing process that does not require the use of pollutants.



Zero-scrap process

Expanded metal is produced without any work scrap with the optimized use of raw materials.



Recycle

At the end of its long working life, expanded metal is subjected to differentiated waste collection for 100% recycling.

ECOLOGICALLY-SUSTAINABLE MATERIAL

*Our expanded metal is greener and greener!
Constant commitment to limit the environmental impact of all processes through the responsible use of resources, differentiated waste collection, recycling, and energy consumption.*



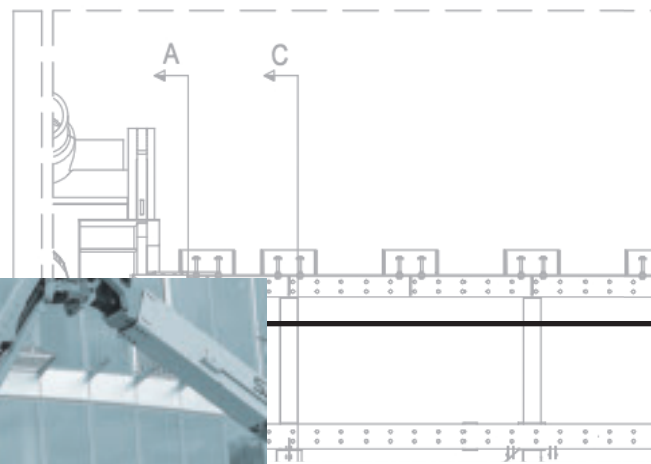
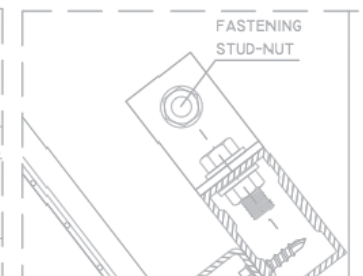
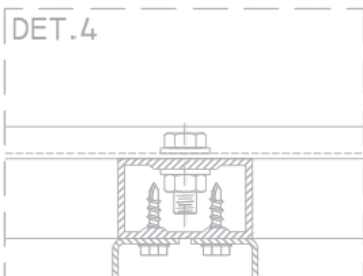
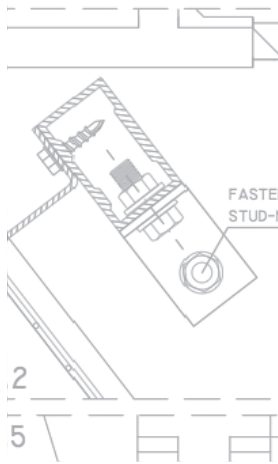
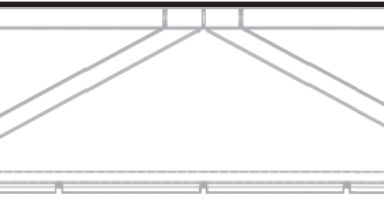
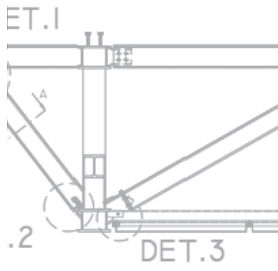
ENVIRONMENTAL CHALLENGES

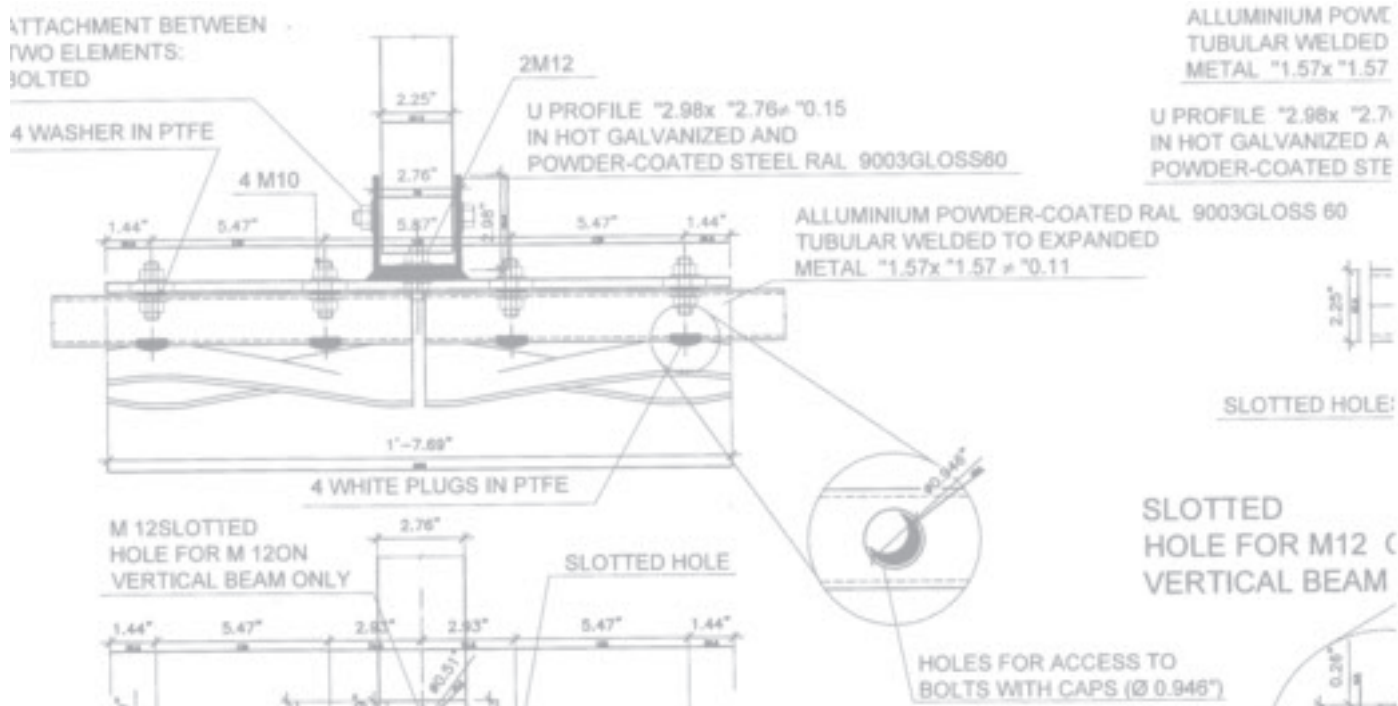
The architecture of the future requires environmentally friendly production processes and materials

CORPORATE RESPONSIBILITY

*All production phases take place in Italy.
Workplaces are safe, and scrupulously comply with all the regulations in force.*







ENGINEERING CHALLENGES

Every project is a new challenge. Our Engineers and Designers have the experience to create innovative solutions for the supporting structure and bespoke fixing systems for the individual project. Always keeping in mind the Architectural effect you want to communicate.

Mesh ALEXA 800 1:3 SCALE





DESIGN AND PRODUCTION CHALLENGES

We work alongside the Architect, façade specialist and Designer to transform simple ideas and small freehand sketches into efficient and producible metal solutions.

Our expanded metal mesh gives shape to ideas.

*NATIONAL AUTOMOTIVE INNOVATION CENTRE (NAIC)
University of Warwick*



*Courtesy of Warwick Manufacturing Group (WMG) – University of Warwick
Image courtesy of Paul Scott - Front Elevation*

*Mesh solution:
2 Bespoke mesh patterns*



*Courtesy of Warwick Manufacturing Group (WMG) – University of Warwick
Image courtesy of Paul Scott - Front Elevation*



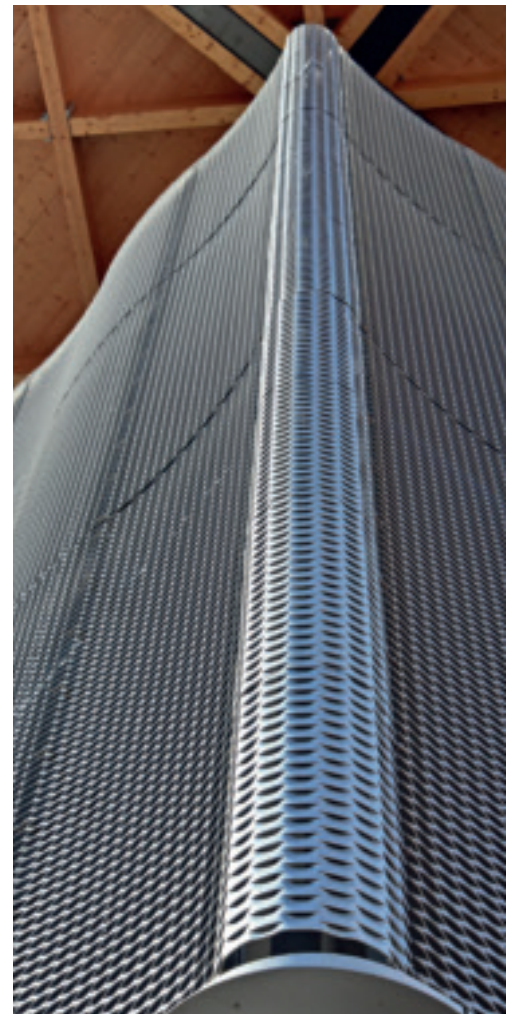
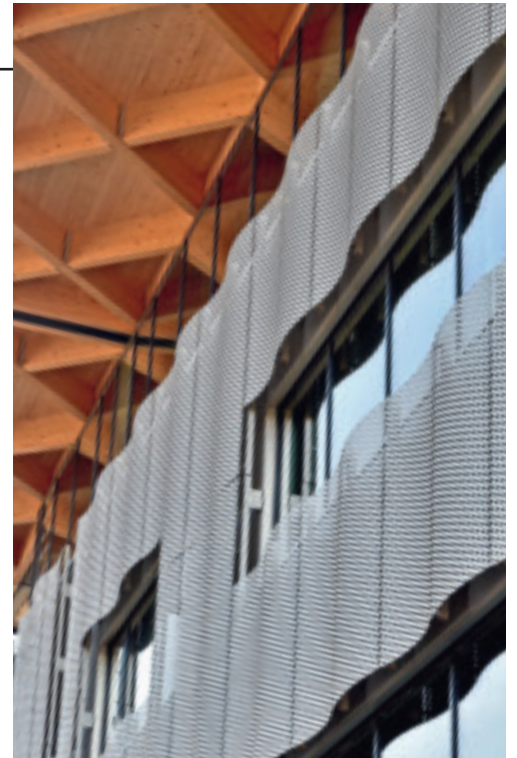
*Courtesy of Warwick Manufacturing Group (WMG) – University of Warwick
Photo credit Nick Dimbleby*



*Courtesy of Warwick Manufacturing Group (WMG) – University of Warwick
Image courtesy of Paul Scott - Front Elevation*



*Courtesy of Warwick Manufacturing Group (WMG) – University of Warwick
Image courtesy of Paul Scott - Front Elevation*



*Courtesy of Warwick Manufacturing Group (WMG) – University of Warwick
Image courtesy of Paul Scott - Front Elevation*

THE BRITISH SUGAR HEADQUARTERS Peterborough

Mesh solution: FILS 5, Aluminium



Image courtesy of Paul Scott Front Elevation.



Image courtesy of Paul Scott Front Elevation.



Image courtesy of Paul Scott Front Elevation.



THE BRITISH SUGAR HEADQUARTERS Peterborough



Image courtesy of Paul Scott Front Elevation.

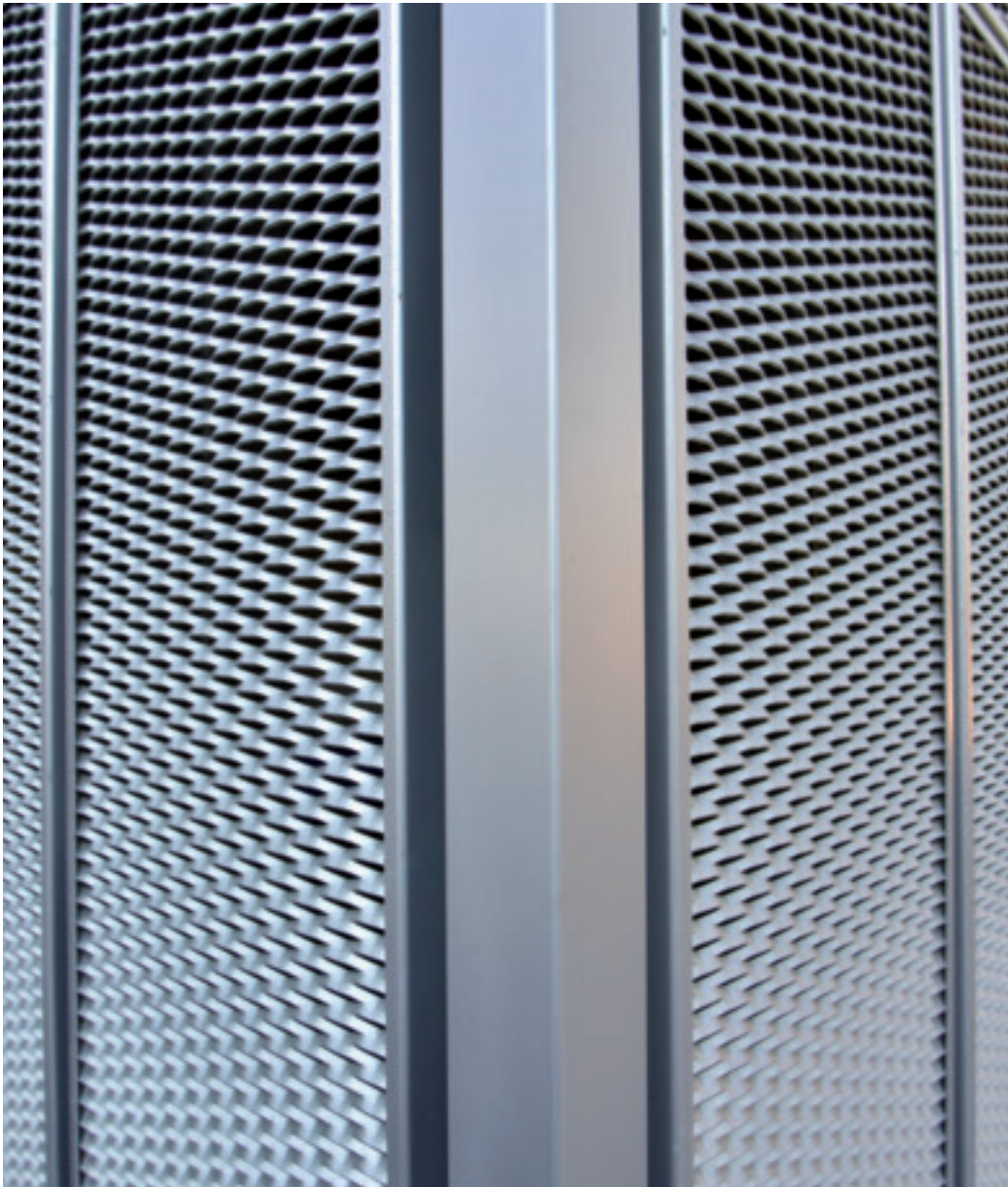


Image courtesy of Paul Scott Front Elevation.



BEDFORD FREE SCHOOL

Bedford

Mesh solution: COLISEUM, Aluminium

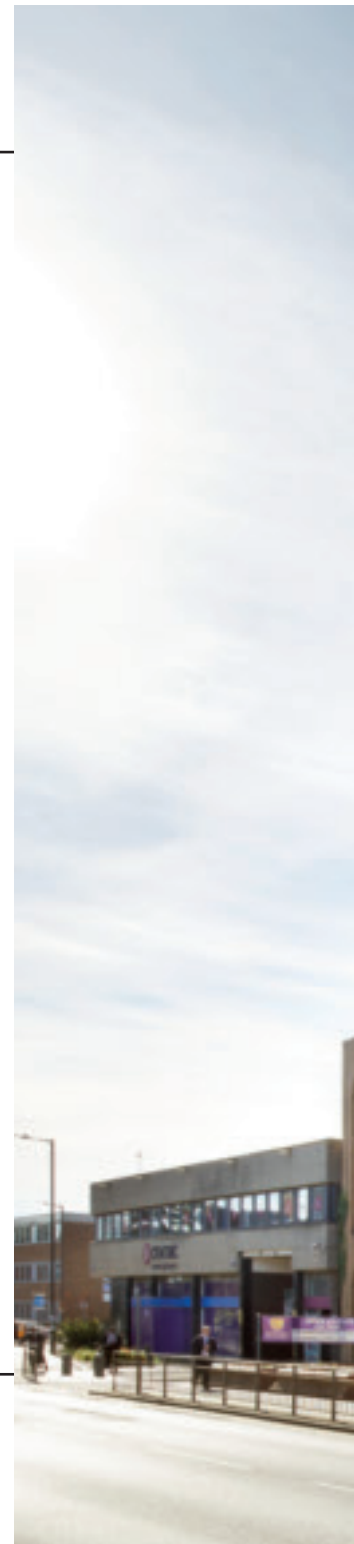


Image courtesy of ECE Architecture, Bedford Free School, Jack Hobhouse Photographer.



Image courtesy of ECE Architecture, Bedford Free School, Jack Hobhouse Photographer.

PICCADILLY STATION CAR PARK Manchester

Mesh solution: COLISEUM, CorTen

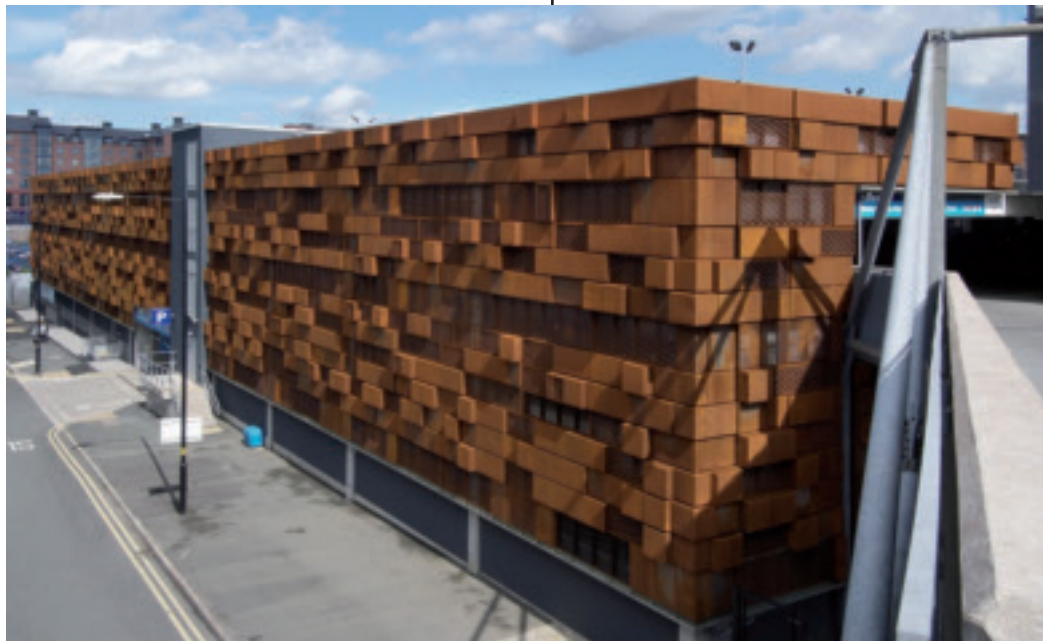
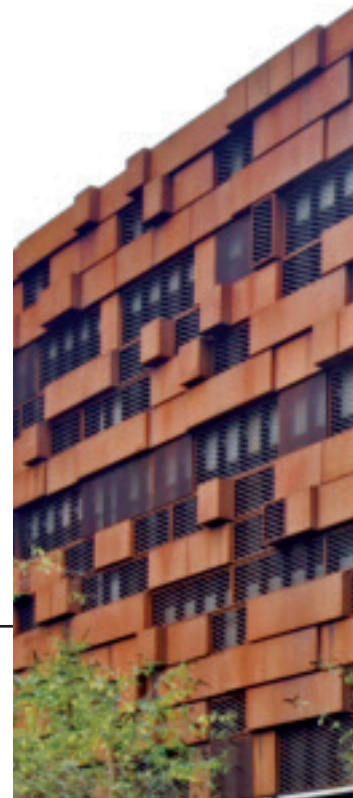


Image courtesy of Paul Scott at Front Elevation.



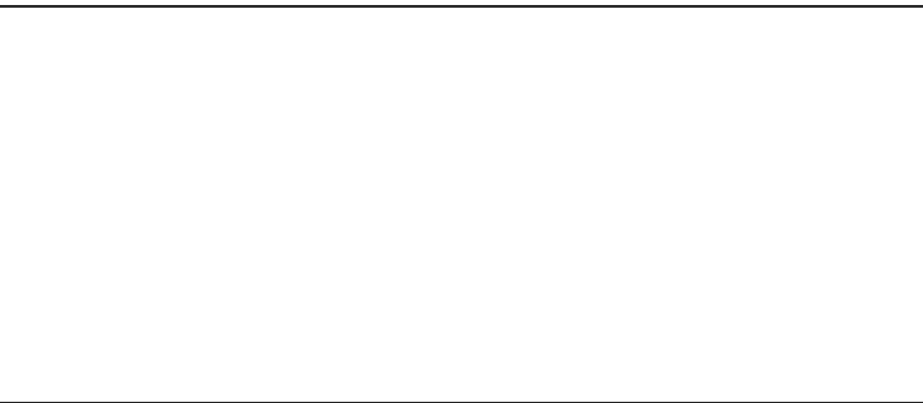


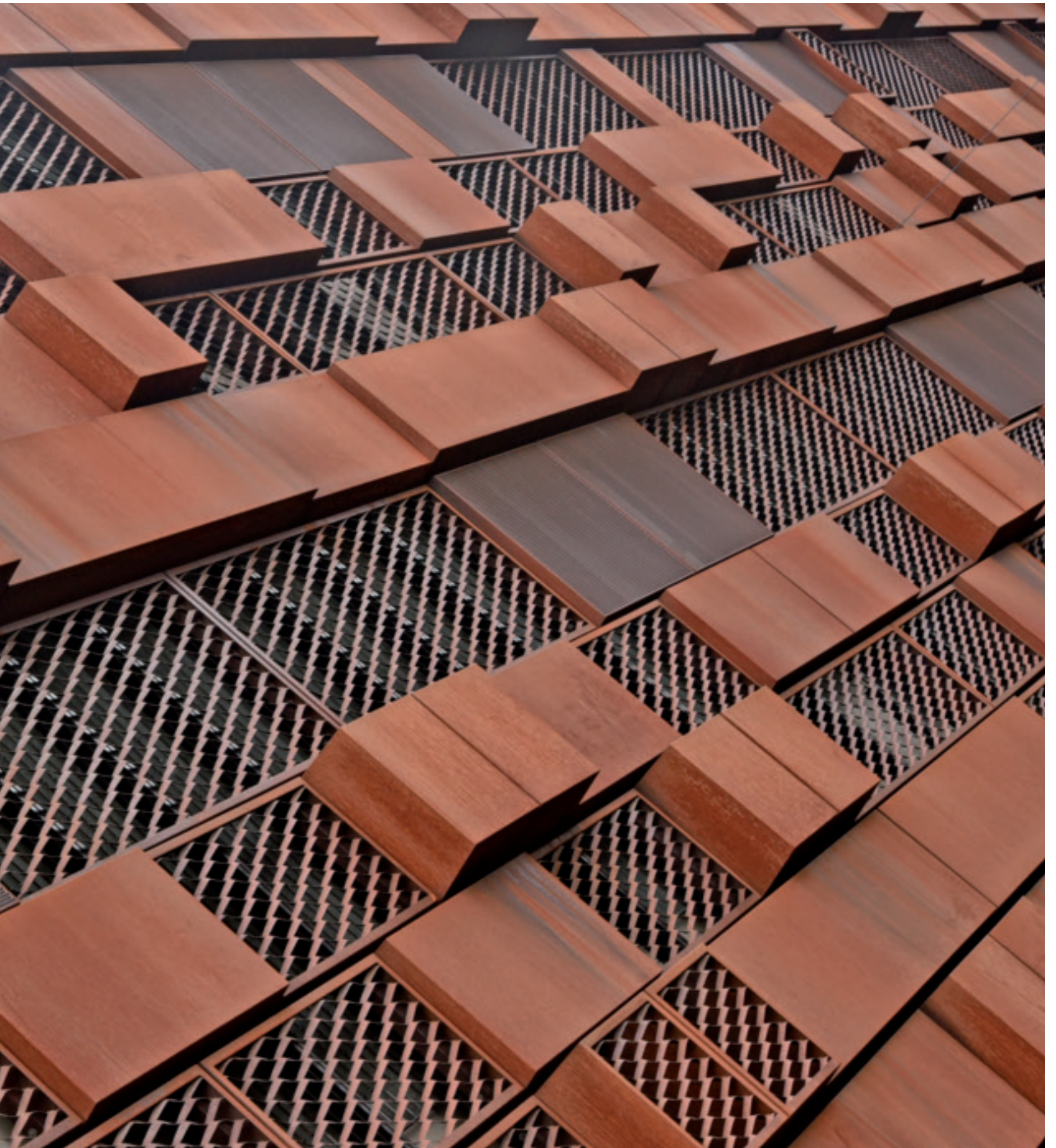
Image courtesy of Paul Scott at Front Elevation.



Image courtesy of Paul Scott at Front Elevation.



Image courtesy of Paul Scott at Front Elevation.



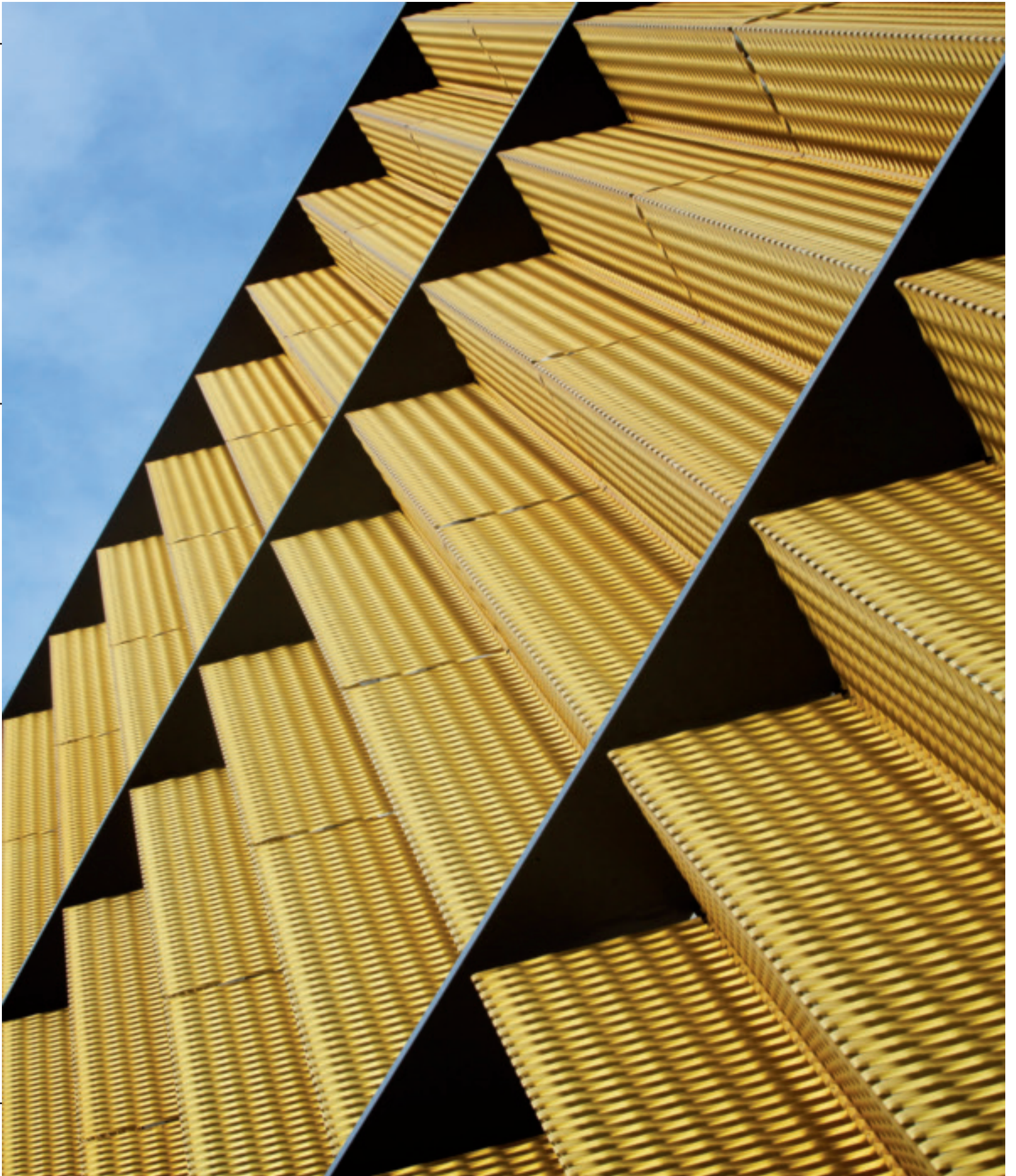
GRAFTON STEET CAR PARK Manchester

Mesh solution:
MTC E 200 - MTC E 100
Aluminium gold anodized

metalltech



Design: Pullman Associated Architects



PERFORMING ARTS AND BUSINESS CENTRE Folkestone

Mesh solution: AMBASCIATA, Aluminium



Design: Allison Brooks Architects



HARRODS FASHION LAB London

Mesh solution: Expanded metal ceiling tiles





CANARY WHARF, LONDON

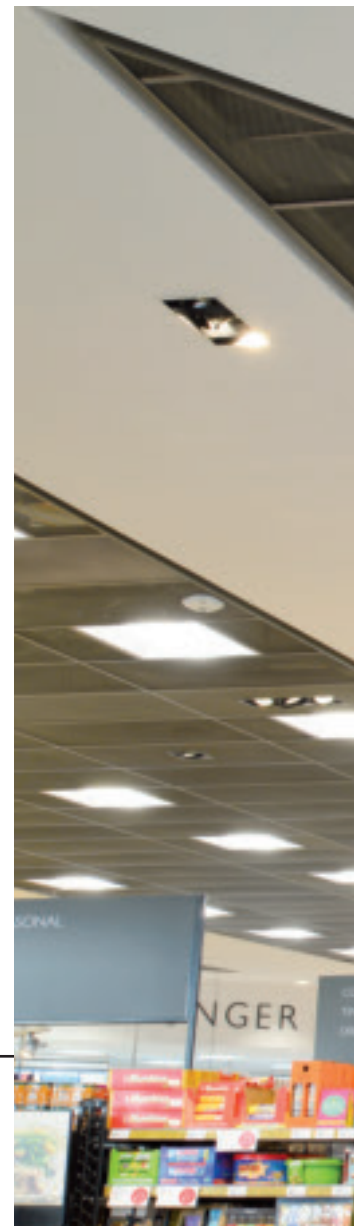


Interior Design by Create Interior Design. Photography © Dave Parker Photography

OFFICE, LONDON



Interior Design by Create Interior Design. Photography © Dave Parker Photography

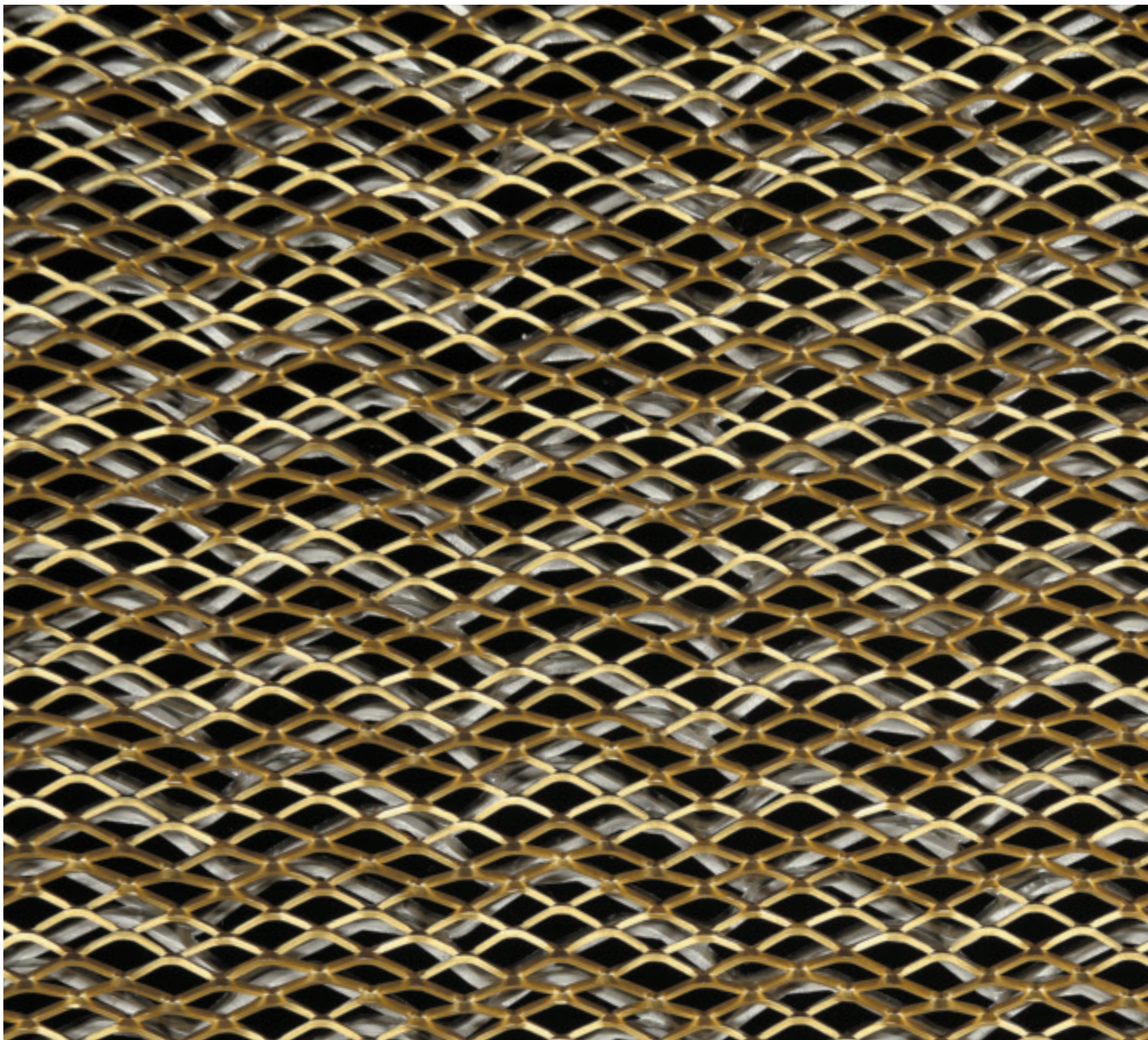


BOOTH'S STORE, ST ANNES



Courtesy of Armstrong

Mesh MTC A 91 - A 95 patented





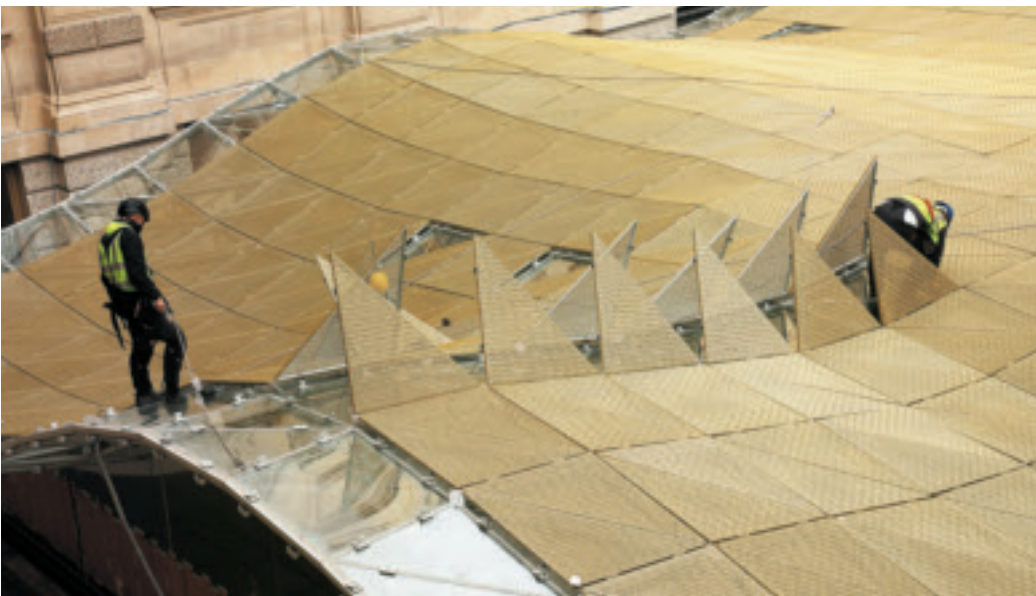
INNOVATION IN STYLE

*Many renown Architects and Designers
in the world enjoy working with us as they value
our ability to create solutions with
innovative expanded metal mesh patterns.*

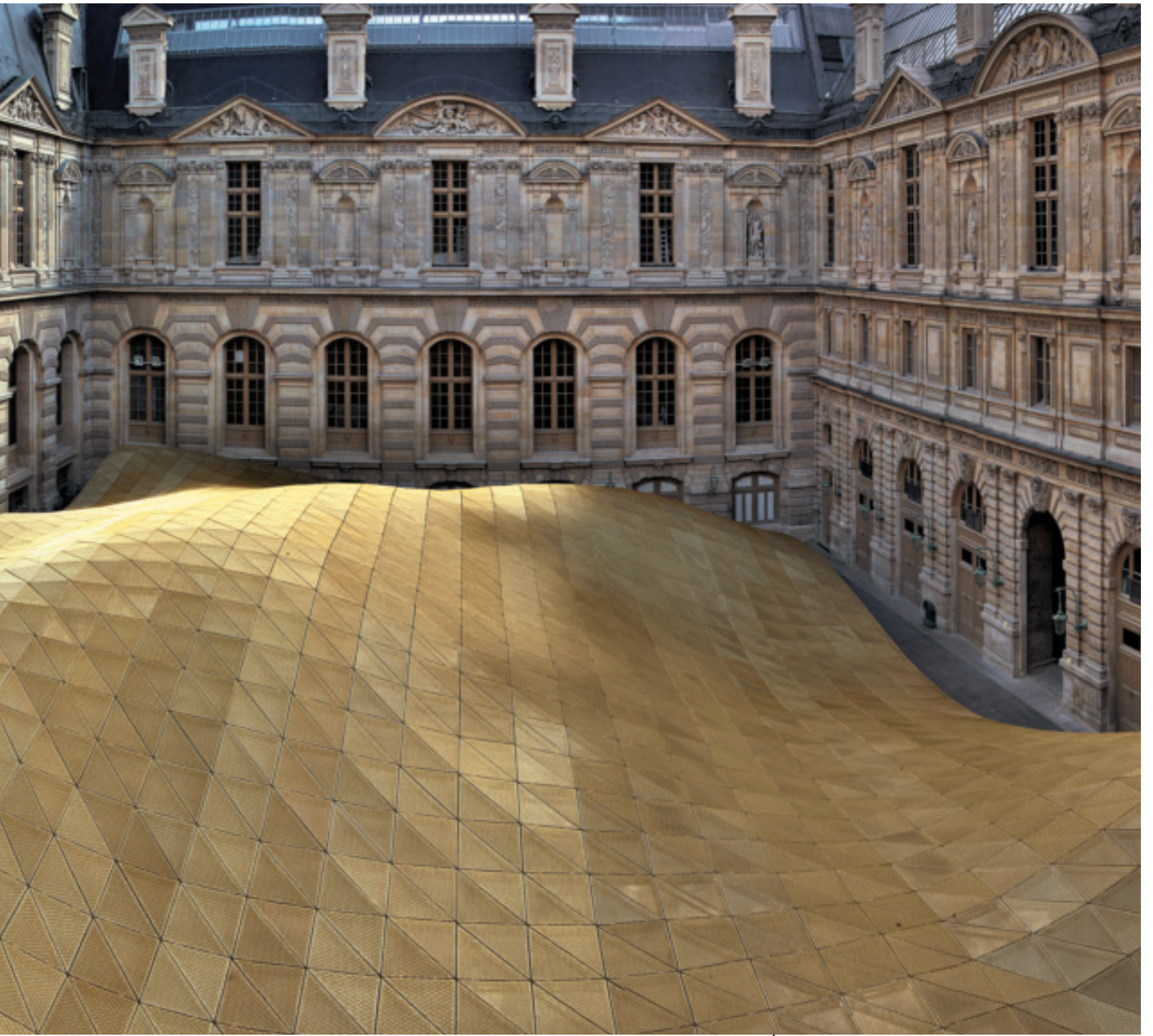
*DEPARTMENT OF ISLAMIC ART LOUVRE
Paris, France*

Mesh solution: MTC A 91 - A 95 patented

metalltech



*Design:
Arch. Mario Bellini, Arch. Rudy Ricciotti*

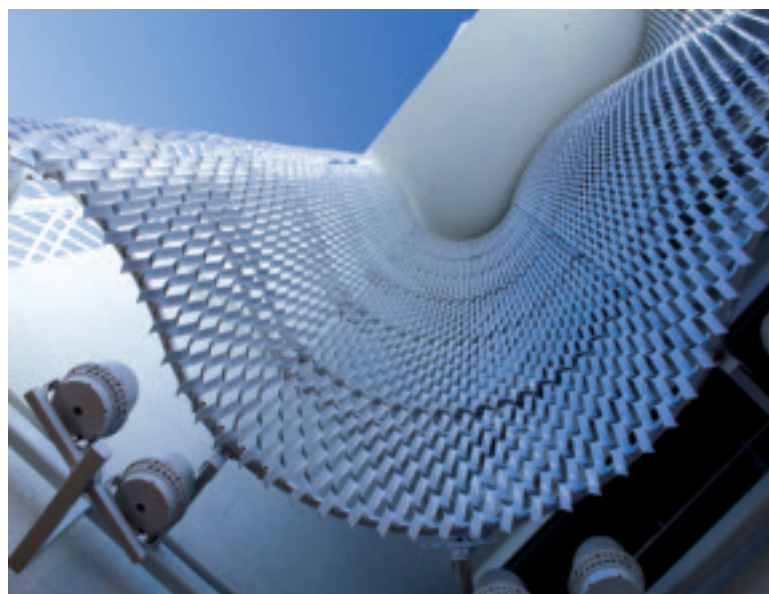


BEVERLY CENTER Los Angeles, USA

Mesh solution: MTC LA 400



Design: Arch. Massimiliano Fuksas



metalltech

AZUR ARENA Antibes, France

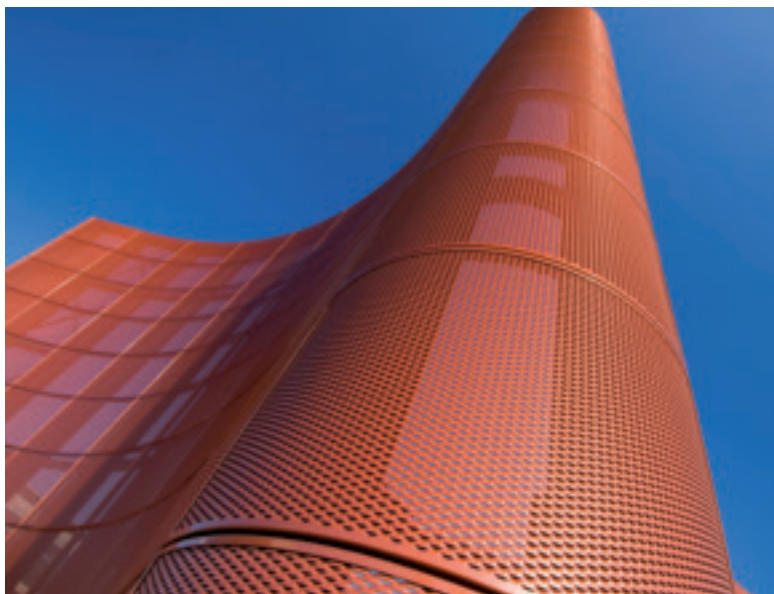
Mesh solution: AMBASCIATA, Aluminium



Design:
Fradin Weck Architecture,
Auer + Weber + Associated

LAFER BRENDOLA COMPANY HEAD OFFICE Vicenza, Italy

Mesh solution: TERRACE, Aluminium



Design: Arch. Roberto Persello

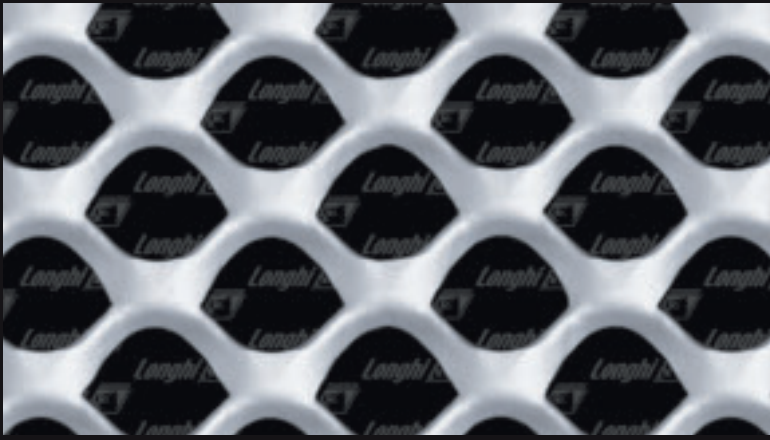


*TONI AREAL
Zurich, Switzerland*

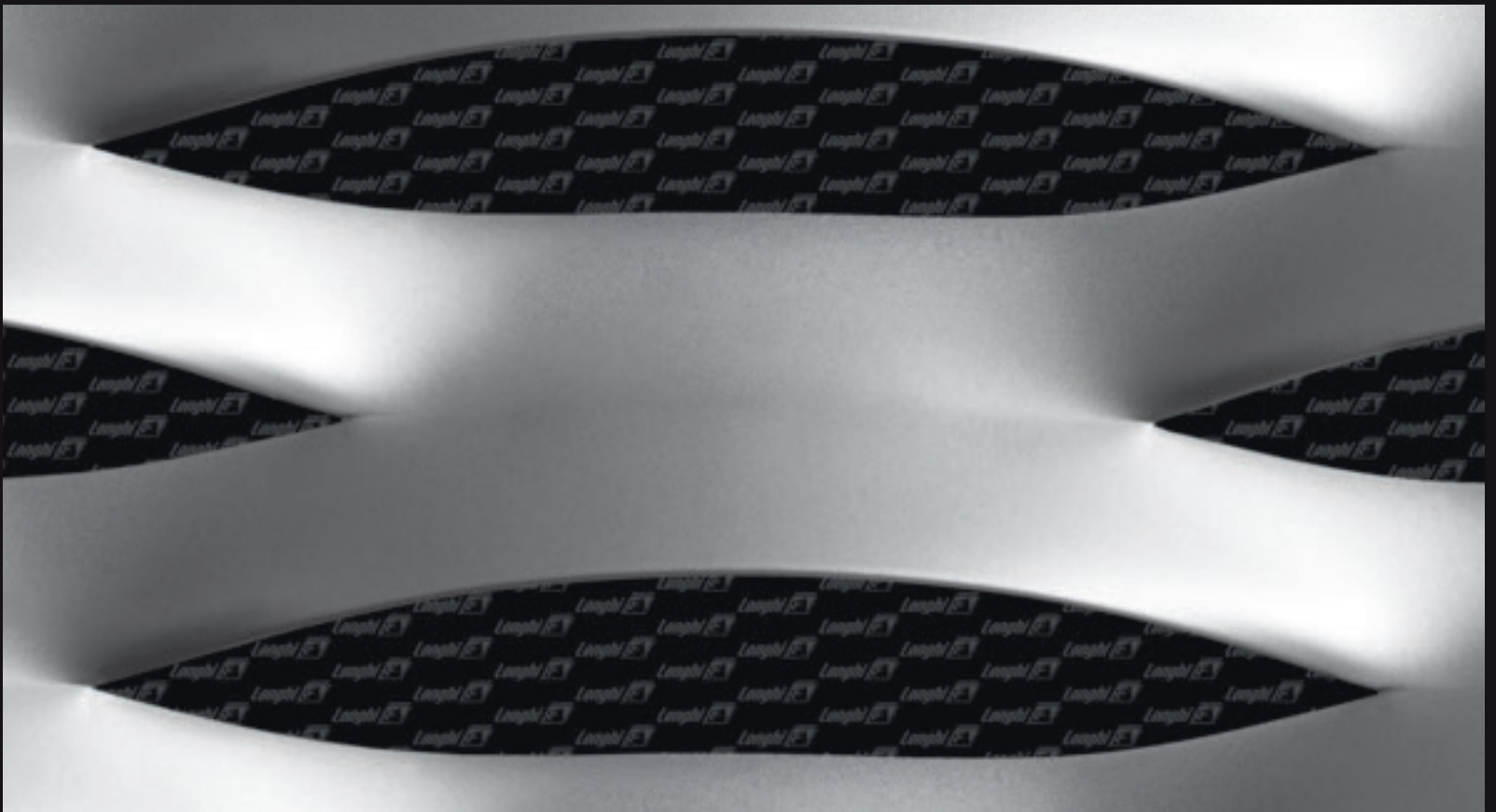
Mesh solution: TAU 40, Aluminium

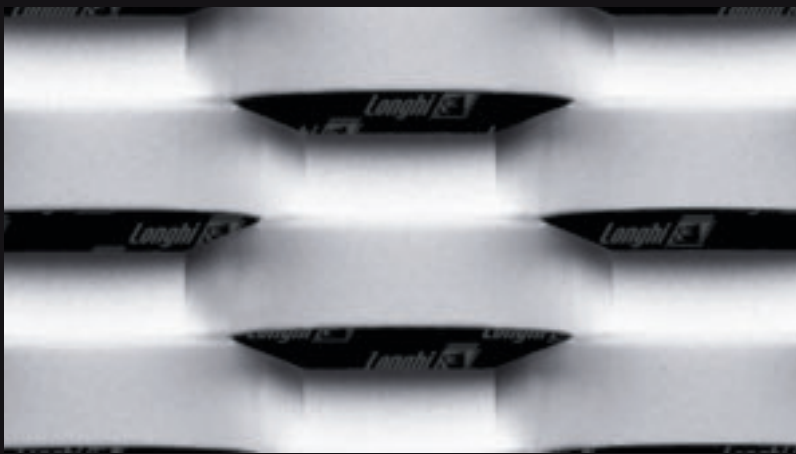


Design: EM2N Architects



AN ENDLESS VARIETY OF EXPANDED METAL SHAPES FOR





THE ARCHITECTURAL COMMUNITY AROUND THE WORLD.





Your contact:

Amedeo Aversa

UK & Ireland Market Specialist

BLUNDELL, STATION ROAD, CHURCHDOWN, GLOS, GL3 2JR, UK

M: +44 (0) 7590 984722

E: amedeo.aversa@longhigroup.com

Fils & Italfim are companies of  **LONGHI HOLDING**

A GROUP CREATED FROM THE HISTORIC AND RENOWN BRAND LONGHIGROUP

 **Fils**
Expanded metal mesh and grating

 **Italfim**
Expanded metal mesh and micromesh